



# #Five2Watch: London Art Fair 2017

Share  (<https://www.facebook.com/sharer/sharer.php?u=http%3A//www.axisweb.org/content-hub/five2watch-london-art-fair/>)   
(<https://twitter.com/home?status=Five%20artists%20from%20%40axisweb%20to%20check%20out%20at%20%40LondonArtFair%20http%3A//www.axisweb.org/content-hub/five2watch-london-art-fair/%20%23LAF17%20%23Five2Watch>)

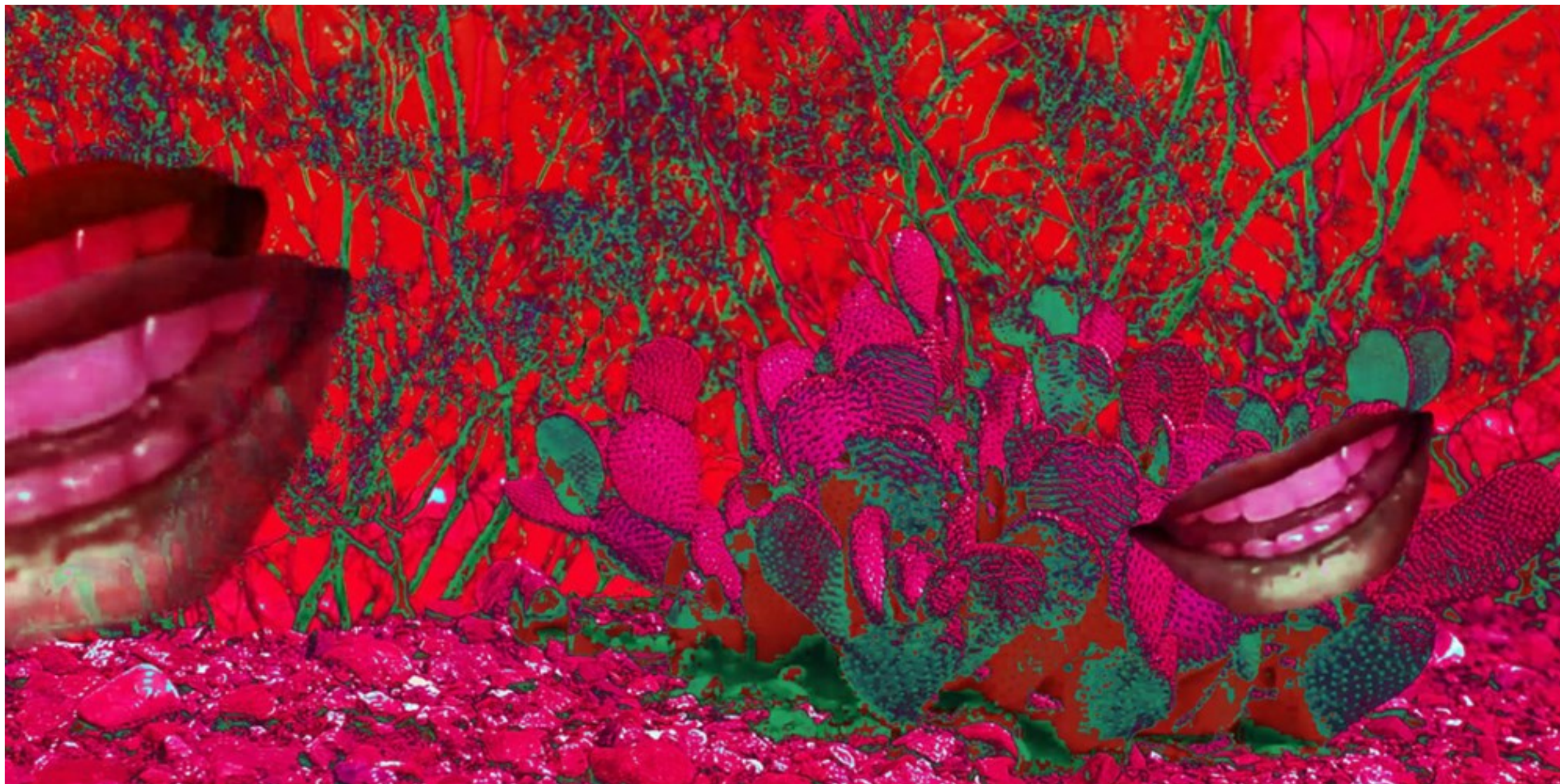
This week we highlight five artists who will be showing at London Art Fair, which opens on the 18 January 2017. Be sure to check them out!

[Victoria Lucas > \(http://www.axisweb.org/p/victorialucas/\)](http://www.axisweb.org/p/victorialucas/)

**Chiara Williams Contemporary Art, Stand P31, Art Projects**

Victoria Lucas is a British artist based in Sheffield. She holds a BA in Fine Art Sculpture from Norwich School of Art, and a MFA in Fine Art from The University of Leeds.

Chiara Williams Contemporary Art is a peripatetic art gallery and consultancy that presents an annual 'SOLO Award' in Art Projects at the London Art Fair.



[\(http://www.axisweb.org/p/victorialucas/\)](http://www.axisweb.org/p/victorialucas/)

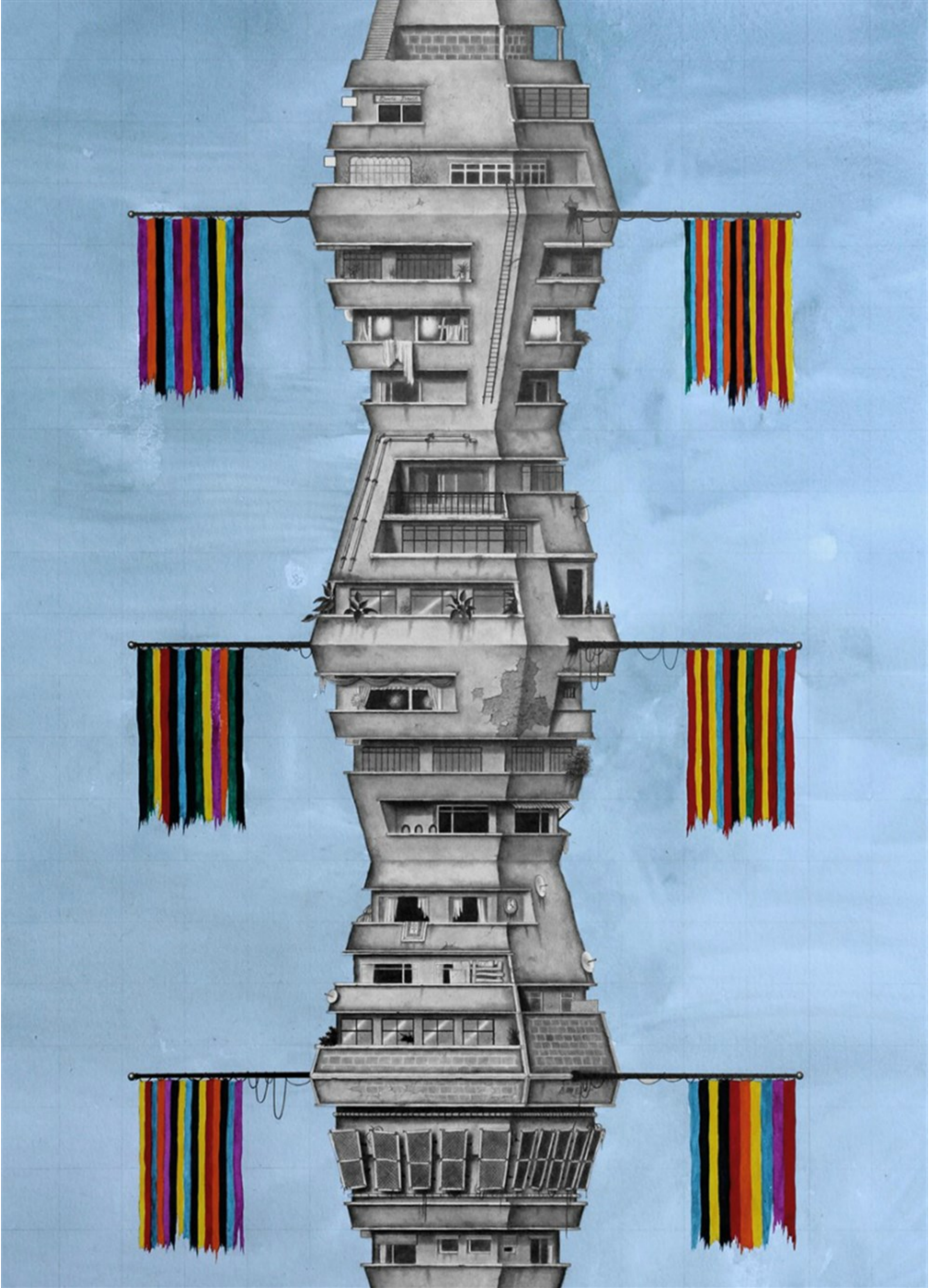
*Still from Lay of the land (and other such myths)*

[Chris Agnew > \(http://www.axisweb.org/p/chrisagnew/\)](http://www.axisweb.org/p/chrisagnew/)

**Kristin Hjellegjerde Gallery, Stand P10, Art Projects**

Chris Agnew is a British artist known for his highly detailed drawings and icon panel etchings. He received his BA in Contemporary Art Practice from The University of Leeds in 2008, followed by a Masters in Fine Art at the Wimbledon College of Art in 2010.

Kristin Hjellegjerde Gallery was established in 2012 and works with international artists, both emerging and established, with strong theoretical and aesthetic bases.



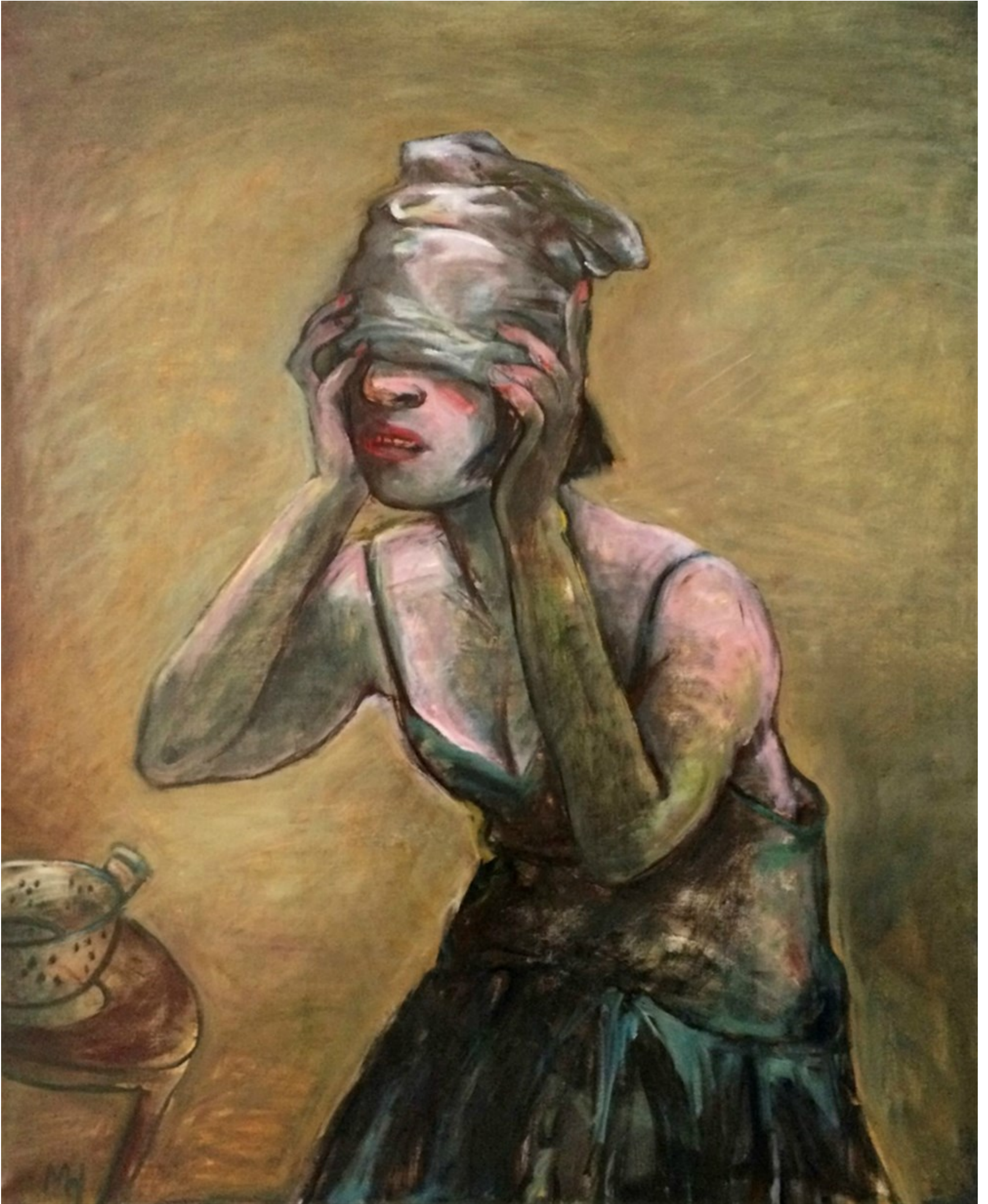
(/p/chrisagnew/)

*Ba da, Doda, 2016*

Marcelle Hanselaar > (<http://www.axisweb.org/p/marcellehanselaar/>)

Marcelle Hanselaar was born in Rotterdam, the Netherlands and is mainly self-taught. She started as an abstract painter before turning to figuration.

Jessica Carlisle established a gallery programme in 2014 and works with a network of mostly British artists.



(/p/marcellehanselaar/)

---

[Chris Stevens > \(http://www.axisweb.org/p/chrisstevens/\)](http://www.axisweb.org/p/chrisstevens/)

**Beaux Arts London, Stand 28, Main Fair**

Chris Stevens is a London-based figurative painter who studied BA Fine Art at the University of Reading.

Beaux Arts was previously located in Cork Street, London before opening a new space in Maddox Street. They exhibit the work of contemporary British painters and sculptors.



(/p/chrisstevens/)

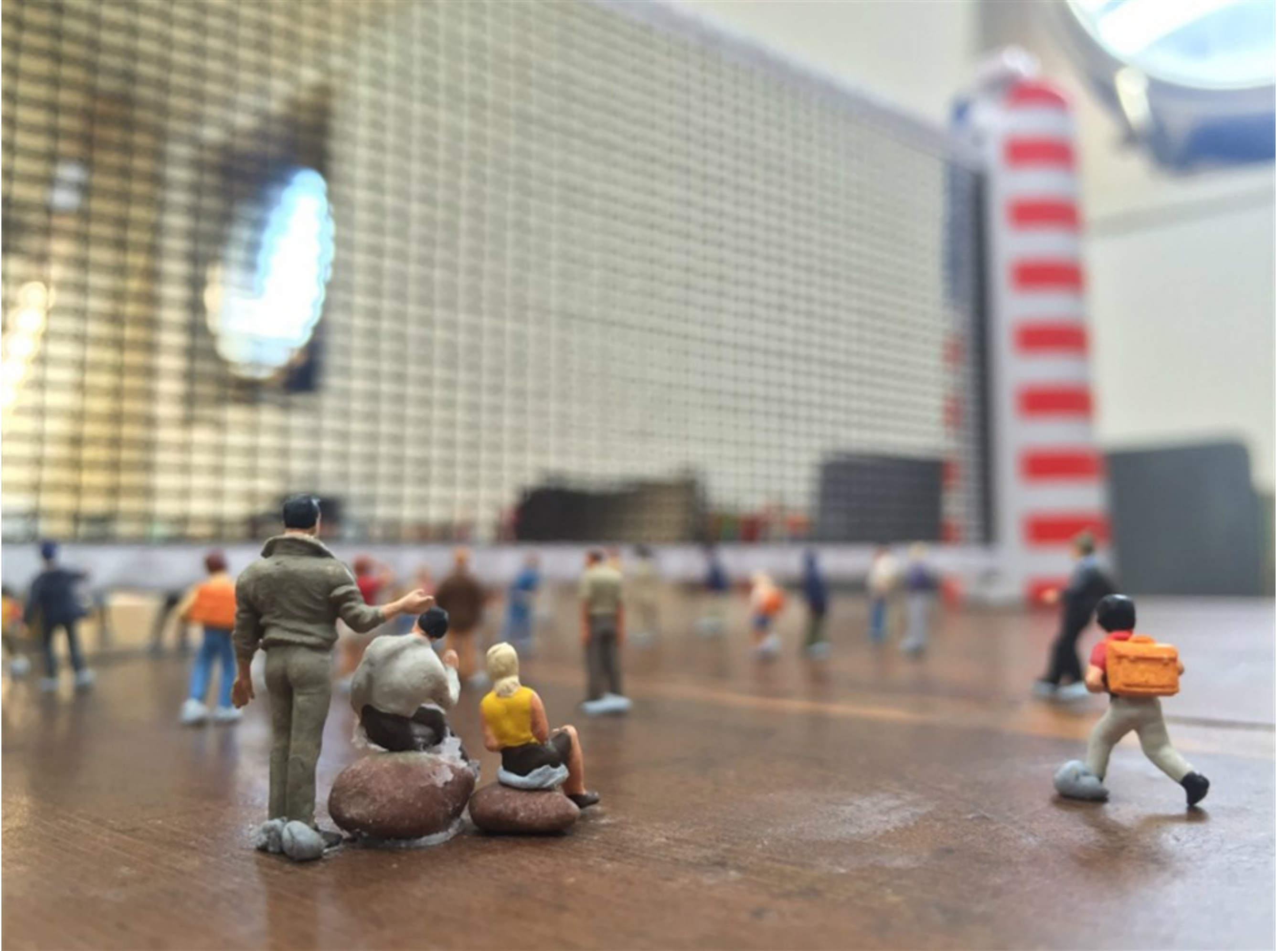
---

David Cotterrell > (<http://www.axisweb.org/p/davidcotterrell/>)

**Danielle Arnaud Contemporary Art, Stand 1B, Main Fair**

David Cotterrell is a London-based artist working with a variety of medi including digital video, audio, intercatve media, AI, device control and hybrid technology.

Danielle Arnaud Contemporary Art was founded in 1995 and works with artists to develop their practice through a programme of exhibitions and projects both in a gallery context and the public realm.



[\(/p/davidcotterrell/\)](#)

*The Wall, 2016*

Published 6 January 2017

[See previous #Five2Watch selections here > \(http://www.axisweb.org/thinking-and-ideas/?tag=five2watch\)](http://www.axisweb.org/thinking-and-ideas/?tag=five2watch)

Find out more about the London Art Fair at [londonartfair.co.uk \(http://www.londonartfair.co.uk/\)](http://www.londonartfair.co.uk)

(L)

[Vacant Space \(/vacant-space/\)](#)

[What's on \(/whats-on/\)](#)

[Blog \(/thinking-and-ideas/\)](#)

[Explore Art \(/discover/\)](#)

[Directory \(/members/\)](#)

[Help \(http://help.axisweb.org/\)](http://help.axisweb.org/)

[Sitemap \(/sitemap/\)](#)



<http://facebook.com/axisweb> <http://twitter.com/axisweb> <http://youtube.com/axisweb> <http://instagram.com/axisweb>