

# Kristin Hjellegjerde Opens a West Palm Beach Gallery

Kristin Hjellegjerde West Palm Beach Opens In Time for Art Week.



## Kristin Hjellegjerde Talks New Galleries and Art Week Happenings

In 2012, Kristin Hjellegjerde opened her first **eponymous gallery**, in Wandsworth, London. Her dedication to exhibiting work by both emerging and established **artists** from around the globe began to flow into new locations, too, with galleries in Berlin, Nevlunghavn, Norway; and Schloss Goerne, Germany, that followed. Most recently, on October 28, Hjellegjerde expanded her reach into the United States with a first location in **West Palm Beach**, presenting **"No Visible Means of Support"** by Sara Berman. On November 11, Hjellegjerde also opened a new London location on Tanner Street, Bermondsey, with "Shrines of Gaiety" by Sinta Tantra.

*Whitewaller* spoke with Hjellegjerde about the West Palm Beach gallery's upcoming group exhibition, timed to open for **New Wave Art Wknd** in Palm Beach, and what she's working on next.



Portrait courtesy of Kristin Hjellegjerde Gallery.

## Kristin Hjellegjerde's Move to Florida

**WHITEWALLER:** You have galleries in London, Berlin, Nevlunghavn, Schloss Goerne, and West Palm Beach. How does your Florida outpost offer something different?

**KRISTIN HJELLEGJERDE:** I'm thrilled to make Florida our first location in the U.S. West Palm Beach was a natural choice as we have been visiting here for many years because my husband, Michael Wurzel, is working on the Norton Museum for Foster + Partners, so we already had a built-in art-forward community. Also, with the influx of people moving to the region, we see positive changes pointing toward an exciting future. As one of our collectors said at the opening, "We will play our part in making the future 'Florence of Florida.'"



**WW:** Palm Beach and West Palm Beach is on the rise, becoming a new hot art market. How would you describe this burgeoning scene?

**KH:** There are great efforts being made around Florida Avenue and the Norton Museum, as the number of galleries here explodes and the area has even been renamed as the "Cultural District." It's exciting to see what this will bring. There are also many younger people moving here, creating a change in the demographics and making an even more vibrant scene.

## What's On View at Kristin Hjellegjerde West Palm Beach

**WW:** Tell us about its latest show, "No Visible Means of Support," by Sara Berman—an artist we also saw in your New York booth at The Armory Show. Why did you want to show her in West Palm Beach as the gallery's first artist?

**KH:** Sara Berman is an artist on the rise. The quality of her work is exceptional, the storytelling current and thought-provoking. With the gargantuan women dominating the space, we thought it would be a powerful beginning to our adventure in West Palm Beach.



Installation view of Sara Berman, "No Visible Means of Support," courtesy of Kristin Hjellegjerde Gallery.

**WW:** What can those in town for Art Week expect to see?

**KH:** We have such an incredible schedule of exciting shows coming up. We will be having a group show in our Salon rooms with Lulu Bennett, Rufai Zakari, Kimathi Mafafo, and Richard Stone for the Palm Beach New Wave weekend on December 2. On December 9, we will open Nigerian artist Nengi Omuku's solo show, followed by Joachim Lambrechts in February with his "American Superheroes" show.

**WW:** What are you looking forward to doing this upcoming Art Week, surrounding Art Basel in early December?

**KH:** It's the people. I am excited about meeting new people, so I can show them our gorgeous gallery space and celebrate and introduce our gallery family of artists with them.

## More from the Gallerist

**WW:** You have a few other projects approaching. What can you tell us about them?

**KH:** We are just finishing up building the walls and getting it ready. Then in January, construction starts on our new London Bridge gallery that will take about two years to finish. I am also working on a book together with writer Millie Walton about the gallery.



Installation view of Sara Berman, "No Visible Means of Support," courtesy of Kristin Hjellegjerde Gallery.

### FURTHER READING

### IN THIS ARTICLE

#### TOPICS

New Galleries

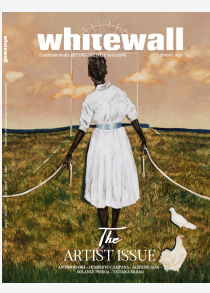
#### LOCATION

Palm Beach

#### TAGS

Kristin Hjellegjerde, Miami Art Week, Palm Beach

### SUBSCRIBE TO MAGAZINE



SPRING ISSUE 2023

SUBSCRIBE

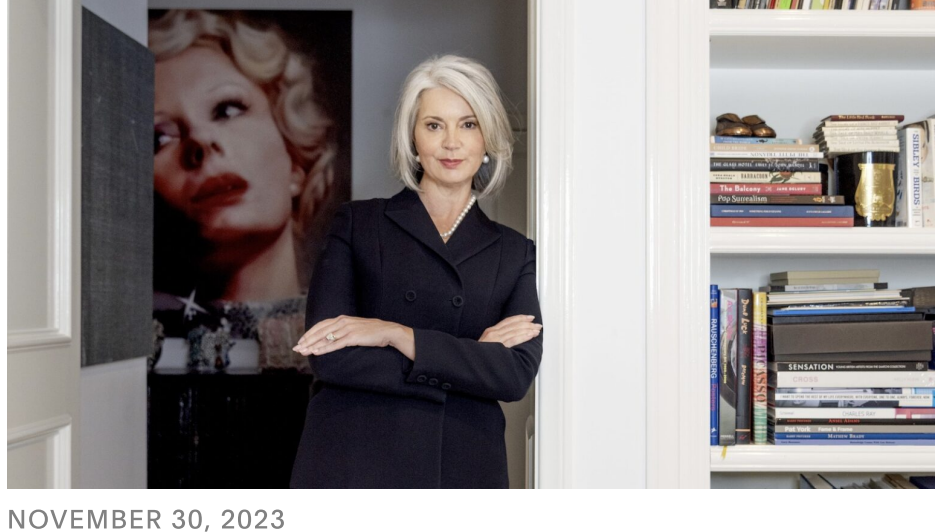
### SUBSCRIBE TO NEWSLETTER

Go inside the worlds of Art, Fashion, Design and Lifestyle.

example@email.com

OK

### READ THIS NEXT



NOVEMBER 30, 2023

## Sarah Gavlak Celebrates Five Years of New Wave Art Wknd

Founder Sarah Gavlak discusses five years of New Wave Art Wknd, which returns to Palm Beach from December 1–3, 2023.



NOVEMBER 30, 2023

## Insider Beth Rudin DeWoody's Palm Beach Favorites

Ahead of Miami Art Week, the collector Beth Rudin DeWoody tells Whitewaller her favorite places in Palm Beach.



NOVEMBER 29, 2023

## Whitewaller Miami is Your Ultimate Guide to Miami Art Week 2023

Whitewaller Miami returns to give you a comprehensive guide to the city for the occasion of Miami Art Week 2023.

### ABOUT US

WHITEWALL STORY

MISSION

OUR VALUES

MASTHEAD

PRIVACY POLICY

TERMS OF SERVICE

### SUPPORT

CONTACT US

TERMS & CONDITIONS

### STAY IN TOUCH

ADVERTISE

GENERAL INQUIRIES

### COMMUNITY

Instagram YouTube Facebook LinkedIn

### SIGN UP TO NEWSLETTER

example@email.com

OK